



# BAHUTO

PRIVATE HOUSING BUILDING  
CAMPO DE OURIQUE . LISBON



A place surrounded by *green spaces* and rich *architectural heritage*.

Small neighbourhood with a *vibrant community*, rich local culture and a *prime location* in Lisbon.



# BAHUTO

PRIVATE HOUSING BUILDING

Welcome to  
**Campo de Ourique**

Choosing *Campo de Ourique* as a place to live is a smart and bold decision. This charismatic Lisbon neighbourhood has seen a steady rise in popularity, driving demand and contributing to a solid and sustained increase in property value.





*Excellent public transport* connects the neighbourhood to the rest of Lisbon, providing *easy access* to central points in the city.

A hub of esteemed institutions, offering a strong foundation for *quality education*.



# BAHUTO

PRIVATE HOUSING BUILDING

Welcome to  
**Campo de Ourique**

With its *prime location*, Campo de Ourique offers quick access to the city's main points of interest, making it an ideal area to live in.





A neighbourhood with strong *cultural appeal*, offering a *wealth of attractions* and unique experiences.



# BAHUTO

PRIVATE HOUSING BUILDING

Welcome to  
**Campo de Ourique**

In a Lisbon that is increasingly on the international radar, the neighbourhood stands out as one of the areas with the greatest *growth potential* and *quality of life*.





# BAHUTO

PRIVATE HOUSING BUILDING

## Campo de Ourique

Exploring it's Key Attractions, Nearby Highlights, and Essential Services in the Heart of Lisbon

- 1 Josefa de Óbidos High School
- 2 Salesianos School
- 3 Engº Ressano Garcia Basic School
- 4 Santo Condestável Church
- 5 Market
- 6 Library
- 7 Teófilo Braga Garden
- 8 Redbridge International School
- 9 Manuel da Maia Basic School
- 10 Municipal Swimming Pool
- 11 EPAL's Amoreiras Reservoir
- 12 Amoreiras Complex Towers
- 13 "Charles Lepierre" High School
- 14 Dom Pedro Hotel
- 15 EPIC SANA Hotel
- 16 Amoreiras Garden
- 17 Pedro Nunes High School
- 18 Casa Fernando Pessoa
- 19 Estrela Garden
- 20 Estrela Basilica
- 21 National Swimming Club
- 22 São Bento Palace Garden
- 23 São Bento Palace (Parliament)





# BAHUTO

PRIVATE HOUSING BUILDING



PLOT AREA  
210.86 sqm



TERRACES



COMMON GARDEN



INDOOR PRIVATE PARKING



TYPOLOGIES T2, T3 & T4





# BAHUTO

PRIVATE HOUSING BUILDING

## Living in Bahuto

The Bahuto Building is located in Campo de Ourique, one of Lisbon's most emblematic neighbourhoods, where life unfolds at a leisurely pace, as it has since the late 19th century. Here, with undeniable charm, the concept of a 15-minute city comes to life. Its privileged location offers easy access to major transport links and routes and to the capital's most iconic attractions.

The building is just a few steps away from Campo de Ourique market and Jardim da Parada, in a neighbourhood traditionally known for its abundance of restaurants - a true food district - alongside a diverse range of street shops and services.

Bahuto is the perfect place for those who value urban living, in an exclusive neighbourhood.

This newly built development consists of four apartments, with T2, T3 and T4 layouts, offering total areas ranging from 103 to 275m<sup>2</sup>.

All residential units include outdoor spaces, storage areas, and private parking.

The Bahuto Building represents with fairness what it means to live with exclusivity and comfort. With an emphasis on quality and sophisticated finishes, these accommodations stand out for their seamless blend of functionality and aesthetics, where comfort is key.

The continuity between indoor and outdoor spaces is enhanced by large glass openings, creating a close connection between living and leisure areas, setting the perfect scene - especially for evenings.

A commitment to environmental sustainability is central to the project, with the use of eco-friendly materials and technological solutions, including a water heating and climate control system powered by a heat pump. Each unit has been designed to deliver excellent energy performance.





# BAHUTO

PRIVATE HOUSING BUILDING



## APARTMENT B

FLOOR 01

TIPOLOGY T3

GROSS AREA 153.74 sqm

## APARTMENT C

FLOOR 02

TIPOLOGY T2

GROSS AREA 114.76 sqm

## APARTMENT D

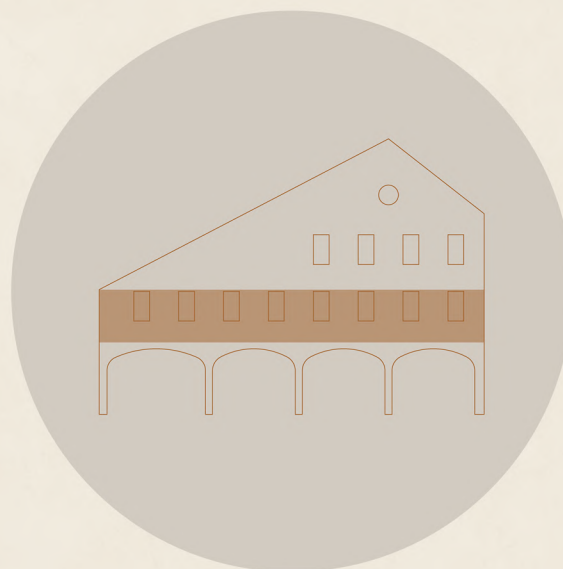
FLOOR 02 | 03

TIPOLOGY T3 DUPLEX

GROSS AREA 153.57 sqm







# B

APARTMENT

FLOOR 01  
TYPOLOGY T3

GROSS AREA **153.74** SQM

PRIVATE GROSS AREA **141.04** SQM

EXTERIOR GROSS AREA **16.85** SQM

PARKING LOT **1**

# BAHUTO

PRIVATE HOUSING BUILDING



**APARTAMENT B**  
FLOOR 01

**TPOLOGY T3**

**GROSS AREA**  
**153.74 sqm**

**PRIVATE GROSS AREA**  
**141.04 sqm**

**EXTERIOR GROSS AREA**  
**16.85 sqm**

**PARKING LOT**  
**1**



FLOOR 01



# BAHUTO

PRIVATE HOUSING BUILDING



**APARTAMENT B**  
FLOOR 01

**TYPOLGY T3**

**GROSS AREA**  
**153.74 sqm**

**PRIVATE GROSS AREA**  
**141.04 sqm**

**EXTERIOR GROSS AREA**  
**16.85 sqm**

**PARKING LOT**  
**1**



Terrace

# BAHUTO

PRIVATE HOUSING BUILDING



**APARTAMENT B**  
FLOOR 01

**TYPOLGY T3**

**GROSS AREA**  
**153.74 sqm**

**PRIVATE GROSS AREA**  
**141.04 sqm**

**EXTERIOR GROSS AREA**  
**16.85 sqm**

**PARKING LOT**  
**1**



Living Room





Bathroom

# BAHUTO

PRIVATE HOUSING BUILDING



APARTAMENT B  
FLOOR 01

TPOLOGY T3

GROSS AREA  
**153.74** sqm

PRIVATE GROSS AREA  
**141.04** sqm

EXTERIOR GROSS AREA  
**16.85** sqm

PARKING LOT  
**1**



Bedroom

# BAHUTO

PRIVATE HOUSING BUILDING



APARTAMENT B  
FLOOR 01

TYOLOGY T3

GROSS AREA  
**153.74** sqm

PRIVATE GROSS AREA  
**141.04** sqm

EXTERIOR GROSS AREA  
**16.85** sqm

PARKING LOT  
**1**





Bedroom

# BAHUTO

PRIVATE HOUSING BUILDING



**APARTAMENT B**  
FLOOR 01

TYPOLGY T3

GROSS AREA  
**153.74 sqm**

PRIVATE GROSS AREA  
**141.04 sqm**

EXTERIOR GROSS AREA  
**16.85 sqm**

PARKING LOT  
**1**





Master Bedroom

# BAHUTO

PRIVATE HOUSING BUILDING



APARTAMENT B  
FLOOR 01

TYOLOGY T3

GROSS AREA  
**153.74** sqm

PRIVATE GROSS AREA  
**141.04** sqm

EXTERIOR GROSS AREA  
**16.85** sqm

PARKING LOT  
**1**





Ensuite

# BAHUTO

PRIVATE HOUSING BUILDING



**APARTAMENT B**  
FLOOR 01

TYPOLGY T3

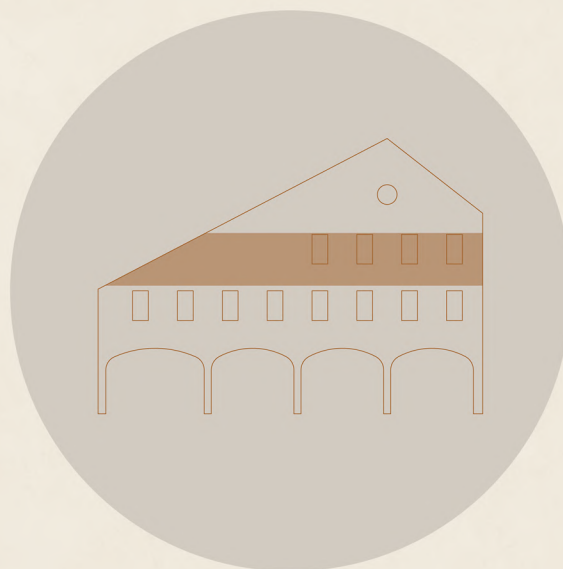
GROSS AREA  
**153.74 sqm**

PRIVATE GROSS AREA  
**141.04 sqm**

EXTERIOR GROSS AREA  
**16.85 sqm**

PARKING LOT  
**1**





**C**  
APARTMENT

FLOOR 02  
TYPOLOGY T2

GROSS AREA **114.76** SQM

PRIVATE GROSS AREA **102.06** SQM

EXTERIOR GROSS AREA **15.43** SQM

PARKING LOT **1**



# BAHUTO

PRIVATE HOUSING BUILDING



APARTAMENT C

FLOOR 02

TYPOLOGY T2

GROSS AREA

**114.76 sqm**

PRIVATE GROSS AREA

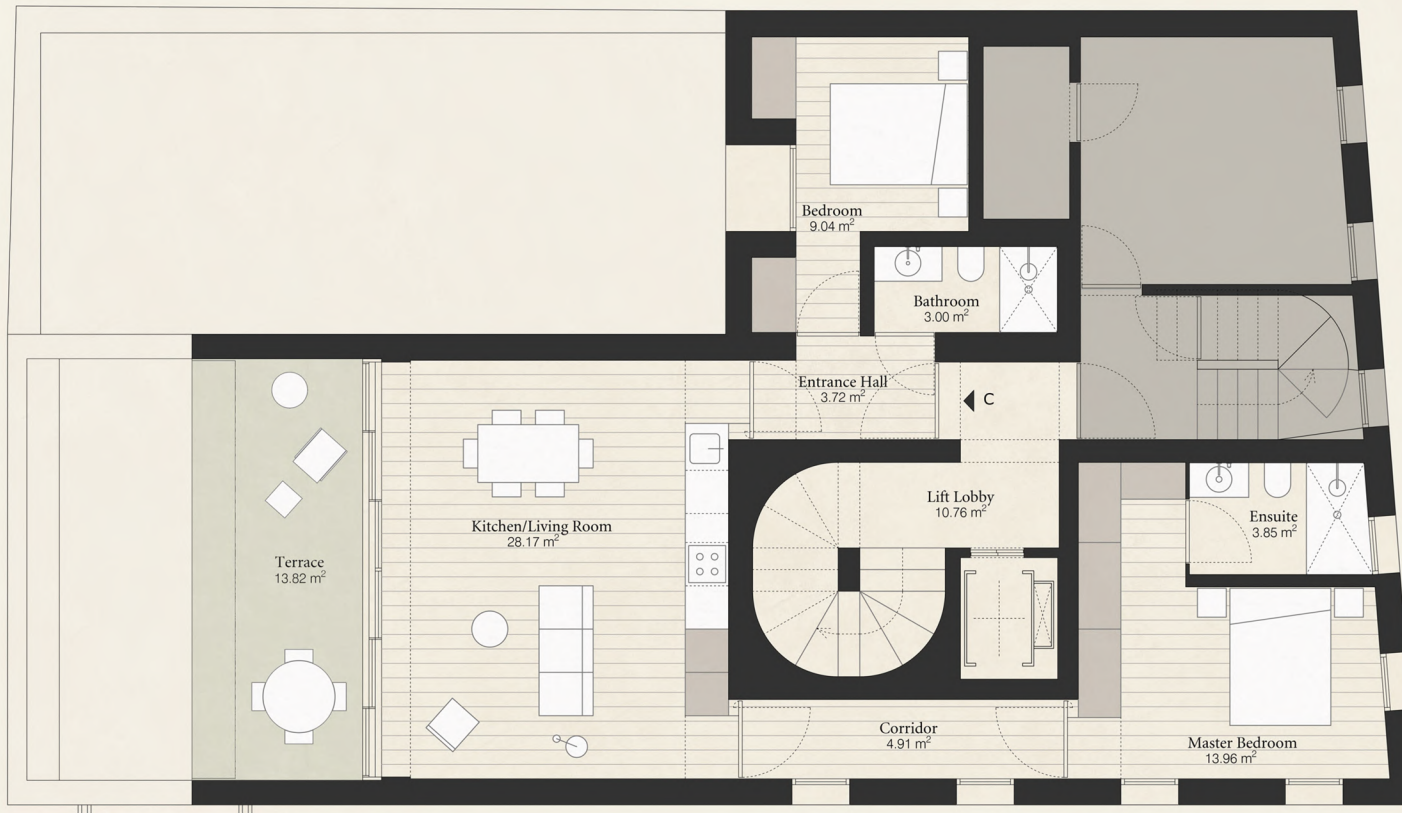
**102.06 sqm**

EXTERIOR GROSS AREA

**15.43 sqm**

PARKING LOT

**1**



FLOOR 02



# BAHUTO

PRIVATE HOUSING BUILDING



APARTAMENT C  
FLOOR 02

TPOLOGY T2

GROSS AREA  
**114.76** sqm

PRIVATE GROSS AREA  
**102.06** sqm

EXTERIOR GROSS AREA  
**15.43** sqm

PARKING LOT  
**1**



Terrace





Living Room

# BAHUTO

PRIVATE HOUSING BUILDING



APARTAMENT C  
FLOOR 02

TYPOLGY T2

GROSS AREA  
**114.76** sqm

PRIVATE GROSS AREA  
**102.06** sqm

EXTERIOR GROSS AREA  
**15.43** sqm

PARKING LOT  
**1**



Bedroom

# BAHUTO

PRIVATE HOUSING BUILDING



APARTAMENT C  
FLOOR 02

TYPOLGY T2

GROSS AREA  
**114.76** sqm

PRIVATE GROSS AREA  
**102.06** sqm

EXTERIOR GROSS AREA  
**15.43** sqm

PARKING LOT  
**1**





Master Bedroom

# BAHUTO

PRIVATE HOUSING BUILDING



APARTAMENT C  
FLOOR 02

TYOLOGY T2

GROSS AREA  
**114.76** sqm

PRIVATE GROSS AREA  
**102.06** sqm

EXTERIOR GROSS AREA  
**15.43** sqm

PARKING LOT  
**1**



Ensuite

# BAHUTO

PRIVATE HOUSING BUILDING



APARTAMENT C  
FLOOR 02

TPOLOGY T2

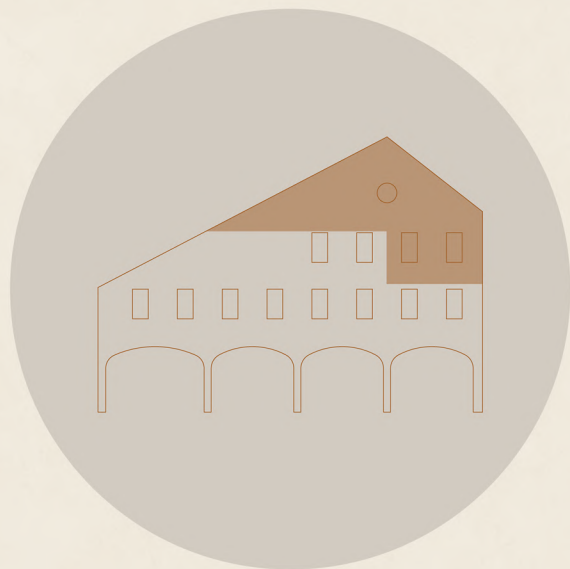
GROSS AREA  
**114.76** sqm

PRIVATE GROSS AREA  
**102.06** sqm

EXTERIOR GROSS AREA  
**15.43** sqm

PARKING LOT  
**1**





**D**

APARTMENT

FLOOR 02 | 03  
TYPOLOGY T3 Duplex

GROSS AREA **153.57** SQM

PRIVATE GROSS AREA **140.87** SQM

EXTERIOR GROSS AREA **16.72** SQM

PARKING LOT **1**

# BAHUTO

PRIVATE HOUSING BUILDING



## APARTAMENT D

FLOOR 02 | 03

TPOLOGY T3

GROSS AREA

**153.57** SQM

PRIVATE GROSS AREA

**140.87** SQM

EXTERIOR GROSS AREA

**16.72** SQM

PARKING LOT

**1**



FLOOR 02  
Duplex 1st floor



# BAHUTO

PRIVATE HOUSING BUILDING



## APARTAMENT D

FLOOR 02 | 03

TIPOLOGY T3

GROSS AREA

**153.57** sqm

PRIVATE GROSS AREA

**140.87** sqm

EXTERIOR GROSS AREA

**16.72** sqm

PARKING LOT

**1**



FLOOR 03  
Duplex 2nd floor



Living Room

# BAHUTO

PRIVATE HOUSING BUILDING



APARTAMENT D  
FLOOR 02 | 03

TPOLOGY T3 DUPLEX

GROSS AREA  
**157.53** sqm

PRIVATE GROSS AREA  
**140.87** sqm

EXTERIOR GROSS AREA  
**16.72** sqm

PARKING LOT  
**1**



# BAHUTO

PRIVATE HOUSING BUILDING



**APARTAMENT D**

FLOOR 02 | 03

**TPOLOGY T3 DUPLEX**

GROSS AREA

**157.53 sqm**

PRIVATE GROSS AREA

**140.87 sqm**

EXTERIOR GROSS AREA

**16.72 sqm**

PARKING LOT

**1**



Living Room



Entrance Hall

# BAHUTO

PRIVATE HOUSING BUILDING



**APARTAMENT D**

FLOOR 02 | 03

**TPOLOGY T3 DUPLEX**

GROSS AREA

**157.53** sqm

PRIVATE GROSS AREA

**140.87** sqm

EXTERIOR GROSS AREA

**16.72** sqm

PARKING LOT

**1**





Bathroom

# BAHUTO

PRIVATE HOUSING BUILDING



APARTAMENT D  
FLOOR 02 | 03

TPOLOGY T3 DUPLEX

GROSS AREA  
157.53 sqm

PRIVATE GROSS AREA  
140.87 sqm

EXTERIOR GROSS AREA  
16.72 sqm

PARKING LOT  
1



Bedroom

# BAHUTO

PRIVATE HOUSING BUILDING



APARTAMENT D

FLOOR 02 | 03

TPOLOGY T3 DUPLEX

GROSS AREA

**157.53** sqm

PRIVATE GROSS AREA

**140.87** sqm

EXTERIOR GROSS AREA

**16.72** sqm

PARKING LOT

**1**





Bedroom

# BAHUTO

PRIVATE HOUSING BUILDING



APARTAMENT D

FLOOR 02 | 03

TPOLOGY T3 DUPLEX

GROSS AREA

**157.53** sqm

PRIVATE GROSS AREA

**140.87** sqm

EXTERIOR GROSS AREA

**16.72** sqm

PARKING LOT

**1**



Bedroom

# BAHUTO

PRIVATE HOUSING BUILDING



**APARTAMENT D**

FLOOR 02 | 03

**TPOLOGY T3 DUPLEX**

**GROSS AREA**

**157.53 sqm**

**PRIVATE GROSS AREA**

**140.87 sqm**

**EXTERIOR GROSS AREA**

**16.72 sqm**

**PARKING LOT**

**1**





**MATERIALS | FINISHINGS**



Lioz Stone



Marble Stone



Oak Wood Floor



Beige Lacquered MDF



Coloured Finishing Coating "Decork Mediterraneo"

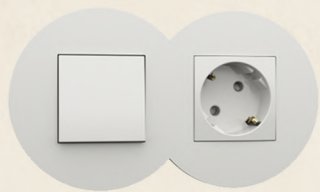


Chrome Finish





**EQUIPMENTS**



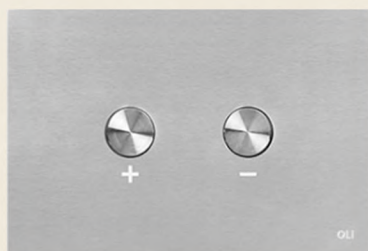
Switch and Socket



Door Handle



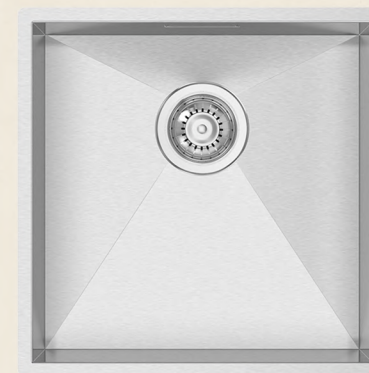
Wall Mounted Toilet



Flush Plate



Sink Mixer



Undermount Kitchen Sink



Undermount Basin



Basin Mixer



Shower Head



Shower Mixer



## MATERIALS AND FINISHES

### GENERAL FINISHES

- Beige Decork Mediterrâneo flooring by Diasen;
- Oak wood plank flooring;
- Walls and ceilings finished in soft beige ;
- Bathrooms with natural-stone flooring, wainscoting and skirting;
  - Wall-hung white sanitary ware;
- Chrome stainless-steel finish bathroom fixtures;
- Natural-stone kitchen countertop;
- Chrome stainless-steel finish kitchen taps;
- Brushed stainless-steel kitchen sink;
- Lacquered MDF kitchen cabinets in beige;
- Fully equipped kitchen with fridge-freezer, hob, oven/microwave, extractor hood, dishwasher and washing machine.;

# BAHUTO

PRIVATE HOUSING BUILDING



**Contact us:**

[www.edificiobahuto.com](http://www.edificiobahuto.com)  
[info@edificiobahuto.com](mailto:info@edificiobahuto.com)





